



PAPERPOLY  
— designs —



TREE TOPPER  
*CHRISTMAS*

VISUAL GUIDE

## Important information

### Model dimensions

Dimensions	(cm)	(inch)
<b>Width</b>	14	5.5
<b>Height</b>	15	5.9
<b>Length</b>	5.3	2.1

### Papers needed

Paper color	Sheets
<b>Yellow</b>	1
<b>Total</b>	1

### Guide orientation

Printed paper face	
	Facing outside
✓	Facing inside

## How to use this guide

This visual assembly guide is represented by two columns. In the left column you will see in bold, the current Step number, and also in bold part number that you will need from the template in that step. Where needed some additional comments will be present.

In the right column you will have a visual representation where each part goes. Parts added in that step will often be colored differently than they are, so you can clearly see which ones are added. Also present is a blue arrow that will point "north", since the view angle of the model will change to better show parts added. This arrow can help you with orientation for easier understanding of the picture.

## Model overview

This model is simple and is done in just a few steps.

- Section 1: Tree Topper



## Section 1 – Tree Topper

Parts needed

Visual guide

### Step 1

1, 2

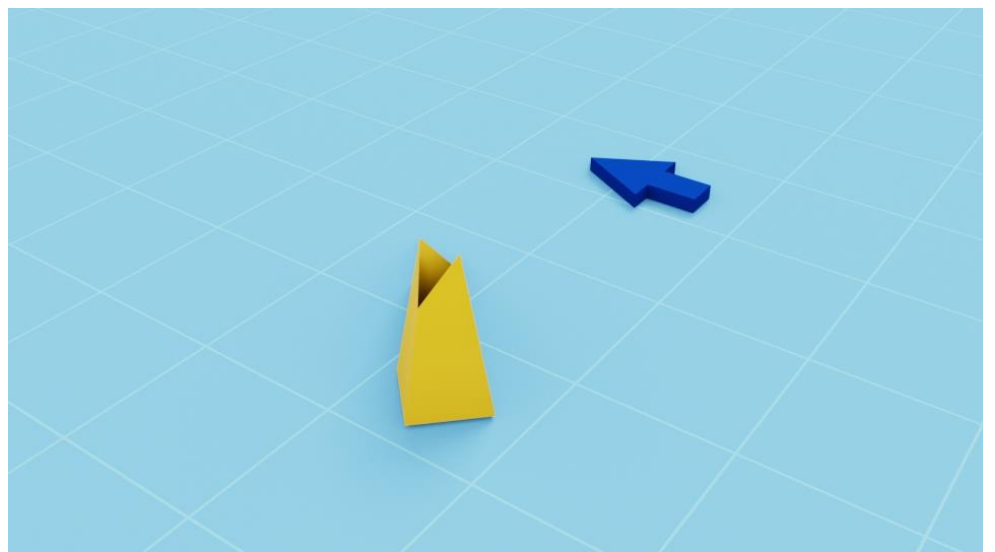
Fold and glue parts 1 and 2 to each other.



### Step 2

3, 4

Fold and glue parts 3 and 4 to each other.

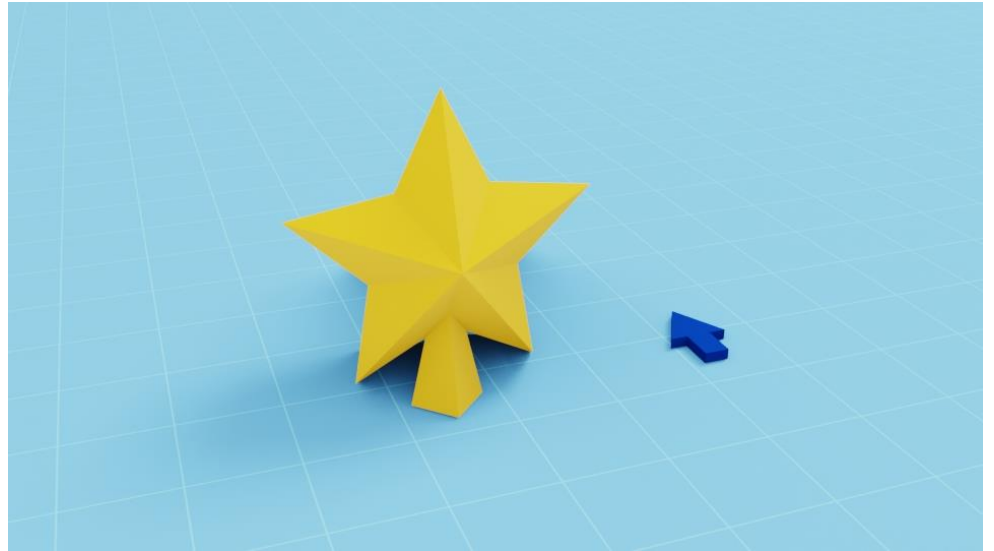




## Step 3

Finally, glue objects that you got from previous two steps to each other.

That's it! You are done :)



## Thank you!

I would like to thank you for purchasing from PaperPoly. Hope you enjoyed making this model, and hope you'll come back for more.

I really appreciate your interest in my designs, it means a lot to me.

I hope that the guide was easy to follow and if you have any questions you can write me where you purchased this template or on social media.

**E-Mail:** [polypaper17@gmail.com](mailto:polypaper17@gmail.com)

**Website:** [www.paperpoly.com](http://www.paperpoly.com)