



PAPERPOLY
— designs —



HEART
FREE

VISUAL GUIDE

Important information

Model dimensions

Dimensions	(cm)	(inch)
Width	10.7	4.2
Height	10.8	4.3
Length	2.9	1.2

Papers needed

Paper color	Sheets
Pink	1
Total	1

Guide orientation

Printed paper face: **Facing inside**

How to use this guide

This visual assembly guide is represented by two columns. In the left column you will see in bold, the current Step number, and also in bold part number that you will need from the template in that step. Where needed some additional comments will be present.

In the right column you will have a visual representation where each part goes. Parts added in that step will often be colored differently than they are, so you can clearly see which ones are added. Also present is a blue arrow that will point “north”, since the view angle of the model will change to better show parts added. This arrow can help you with orientation for easier understanding of the picture.

Model overview

This model is very simple and is done in few steps.

- Section 1: Heart



Parts needed

Visual guide

Heart

Step 1

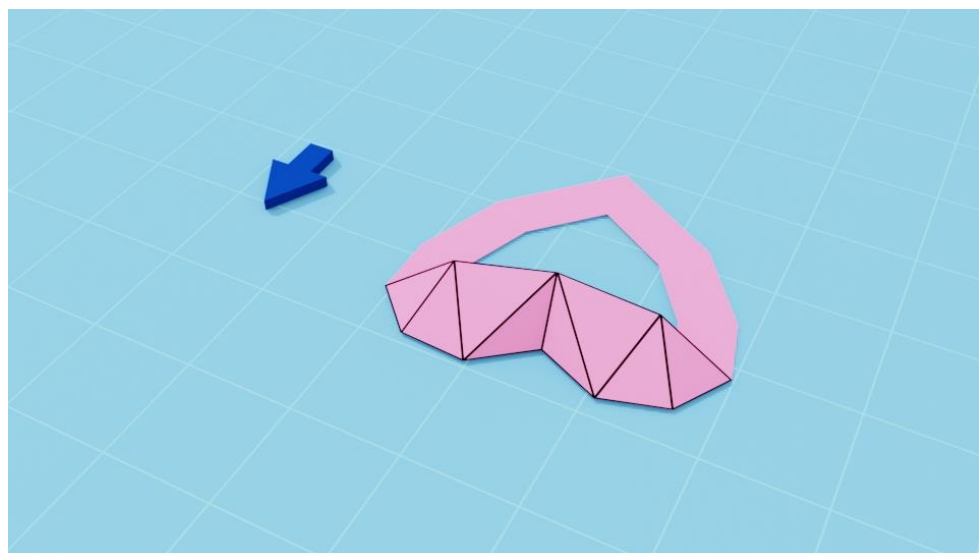
1



Heart

Step 2

2

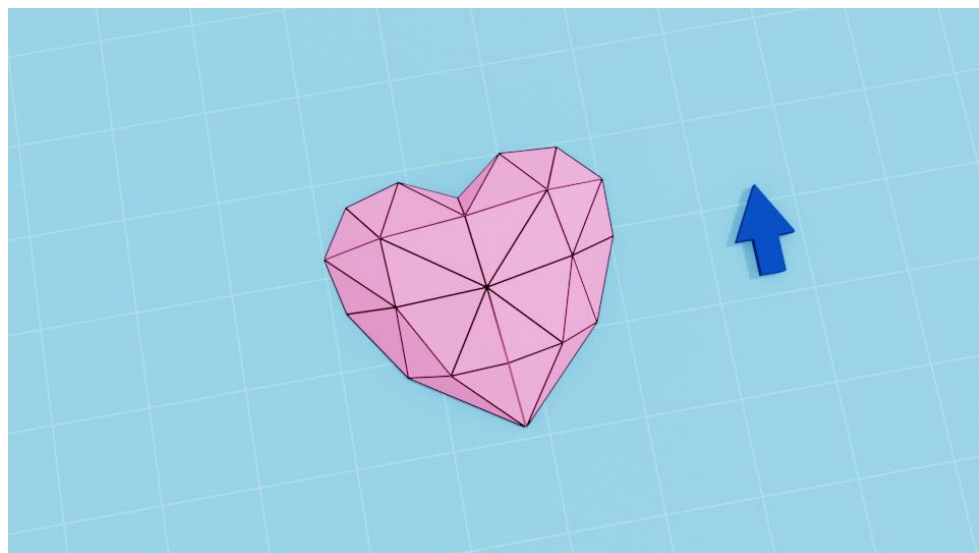


Heart

Step 3

3

You can print the template as many times as you wish or in different color to create lots of hearts. :)





Thank you!

I would like to thank you for purchasing from PaperPoly. Hope you enjoyed making this model, and hope you'll come back for more.

I really appreciate your interest in my designs, it means a lot to me.

I hope that the guide was easy to follow and if you have any questions you can write me where you purchased this template or on social media.

E-Mail: polypaper17@gmail.com

Website: www.paperpoly.com

If you want to signup for my newsletter you can do it at my website. I send newsletters once a month (or less) and there is always a free template for you as a gift. Sometimes there will be a month long coupon code for your next purchase.