



PAPERPOLY
— designs —



TINY TREE
FREE

VISUAL GUIDE

Important information

Model dimensions

| Dimensions | (cm) | (inch) |
|------------|------|--------|
| Width | 14.1 | 5.6 |
| Height | 25 | 9.8 |
| Length | 12.2 | 4.8 |

Papers needed

| Paper color | Sheets |
|-------------|--------|
| White | 4 |
| Brown | 1 |
| Total | 5 |

Guide orientation

Printed paper face: **Facing inside**

How to use this guide

This visual assembly guide is represented by two columns. In the left column you will see in bold, the current Step number, and also in bold part number that you will need from the template in that step. Where needed some additional comments will be present.

In the right column you will have a visual representation where each part goes. Parts added in that step will often be colored differently than they are, so you can clearly see which ones are added. Also present is a blue arrow that will point "north", since the view angle of the model will change to better show parts added. This arrow can help you with orientation for easier understanding of the picture.

Model overview

This model is done in just 1 section.

- Section 1: Tiny Tree



Section 1 – Tiny Tree

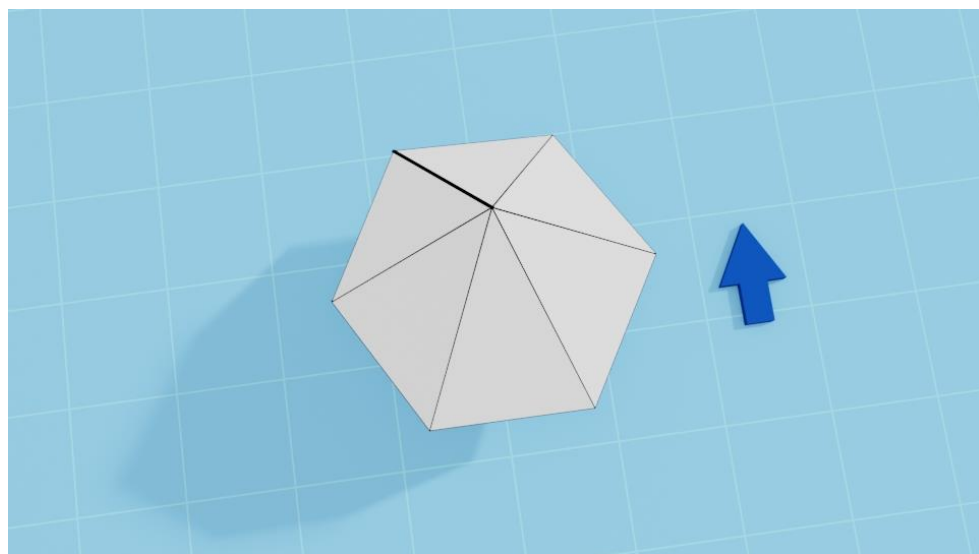
Parts needed

Visual guide

Step 1

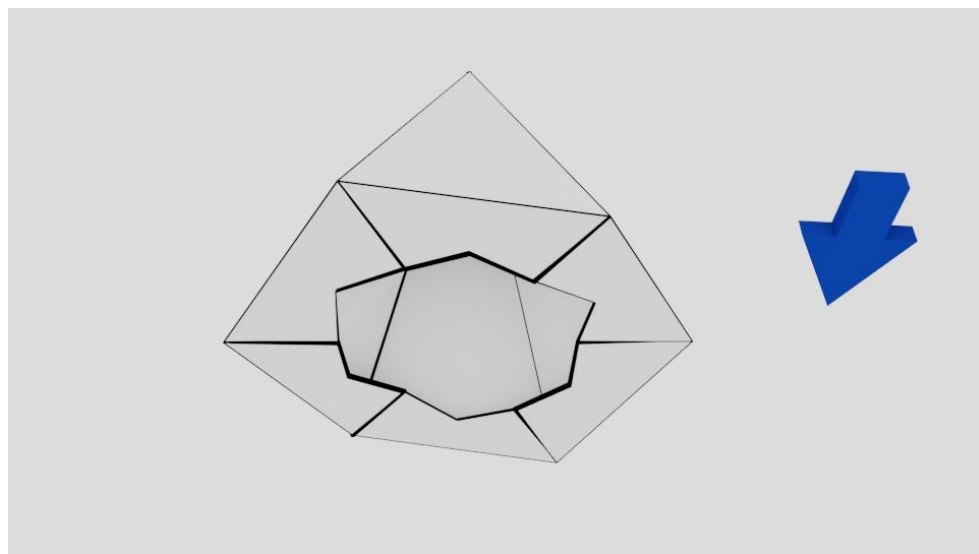
1

Start by gluing the longest flap on the part 1 itself. Thicker line on the image shows where the flap is glued.



Step 2

Then you can fold and glue all the flaps at the bottom by going in circle.

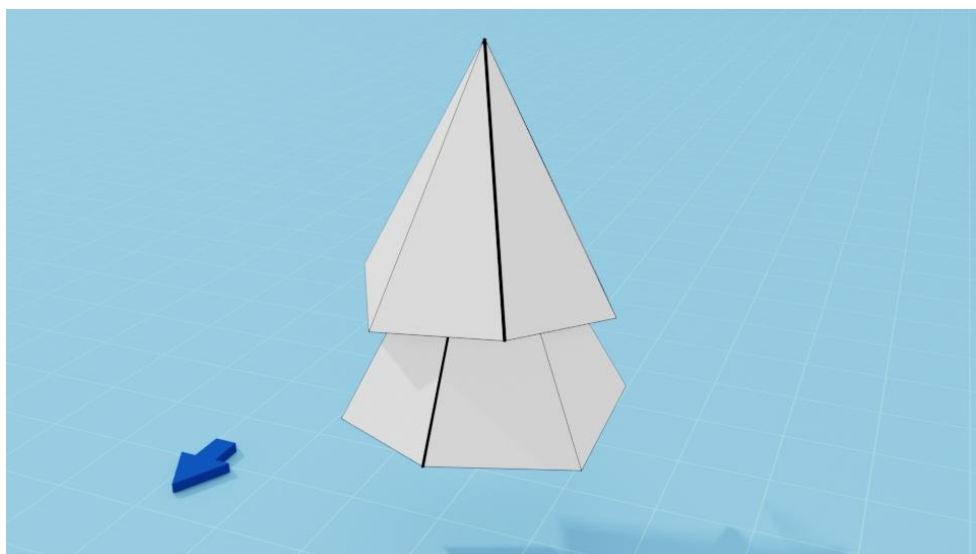




Step 3

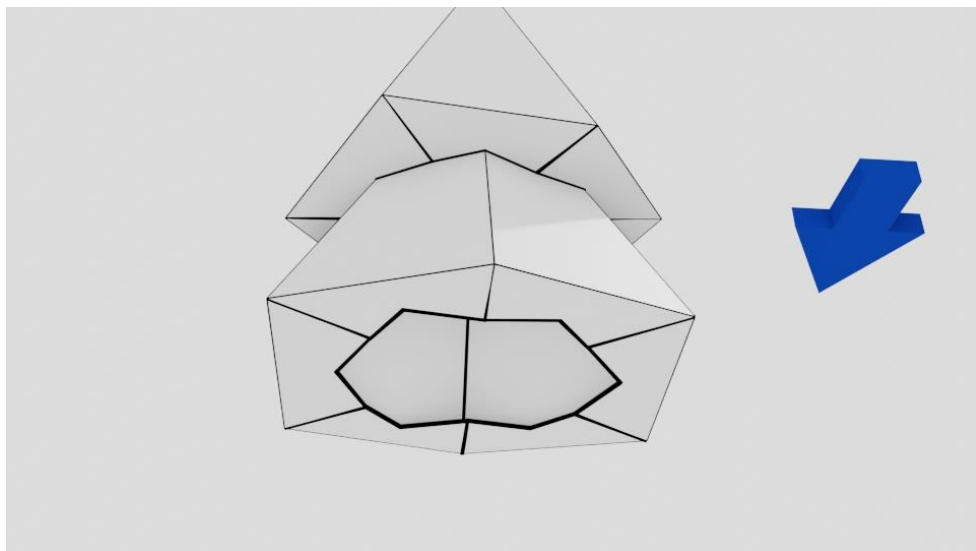
2

Now glue part 2 to part 1. I found that glueing 2 adjacent flaps at the time, and then going in circle glueing next two works best.



Step 4

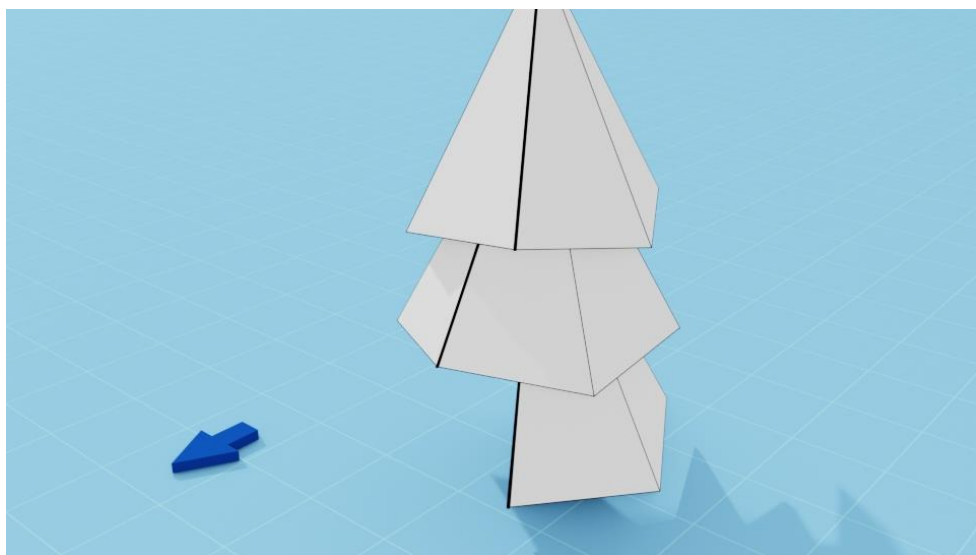
Now you can fold and glue the bottom flaps.



Step 5

3

First half of the 3rd row. Same as before, glue the top, and leave bottom flaps for now.

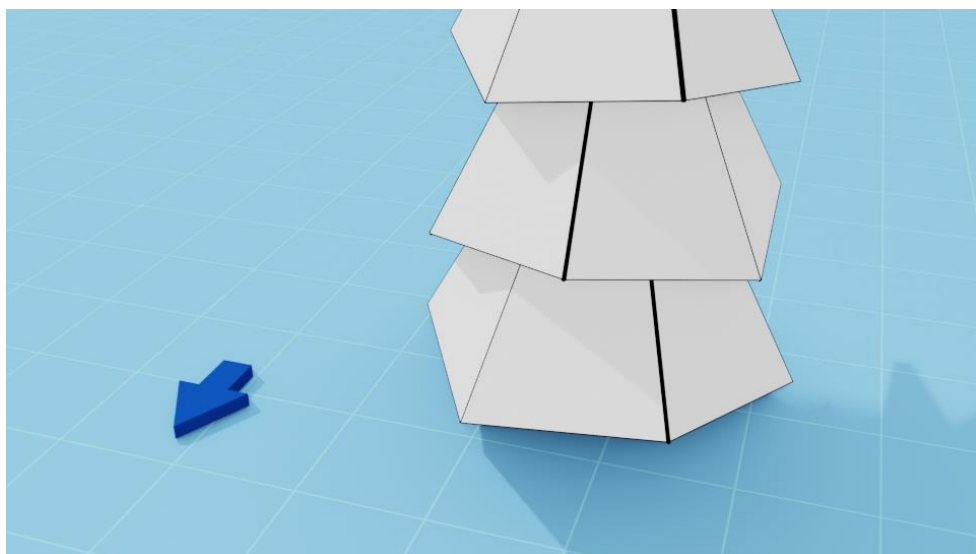




Step 6

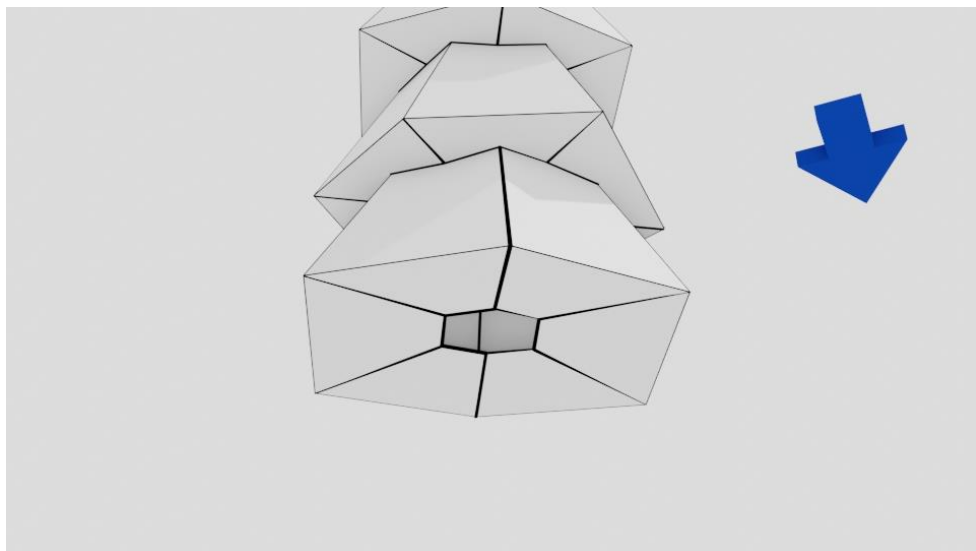
4

Second part of the 3rd row.



Step 7

Finally, fold and glue the bottom flaps. This way you'll have some room so you can press the flap with your finger. For the last move, you'll have to put your finger through the hole to reach the flap.



Step 8

7

Either glue the part 7 itself first and then glue it to the rest of the tree or go in circles and glue flap by flap.

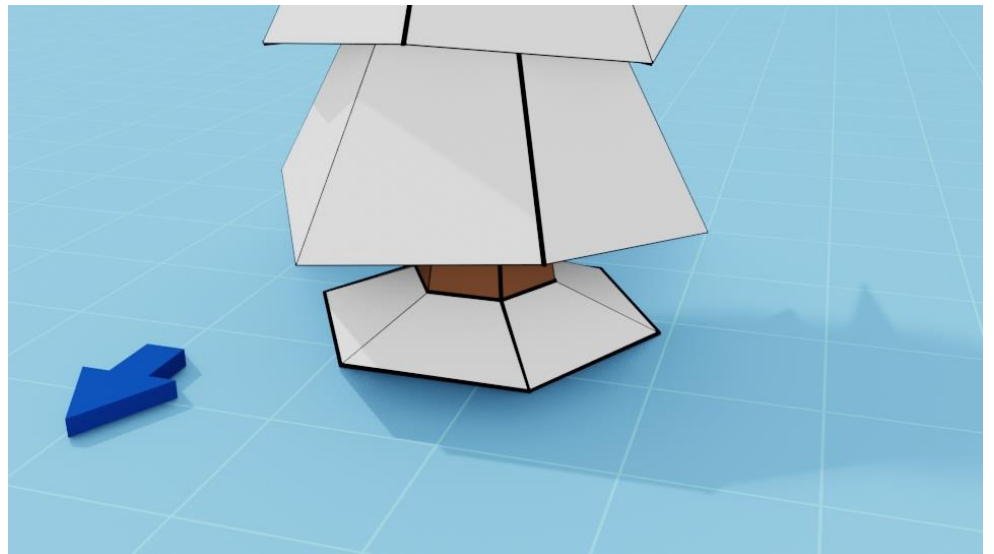




Step 9

5

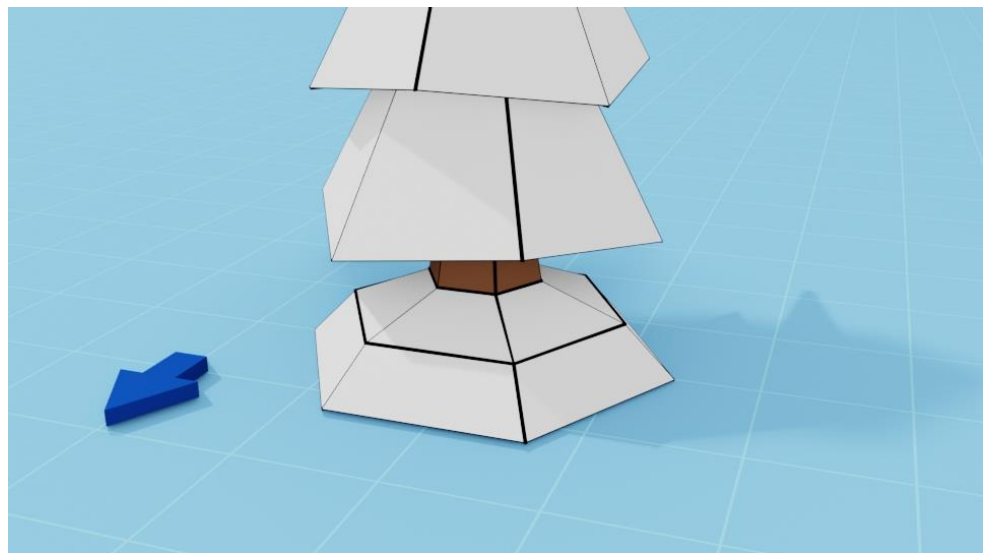
Add part 5.



Step 10

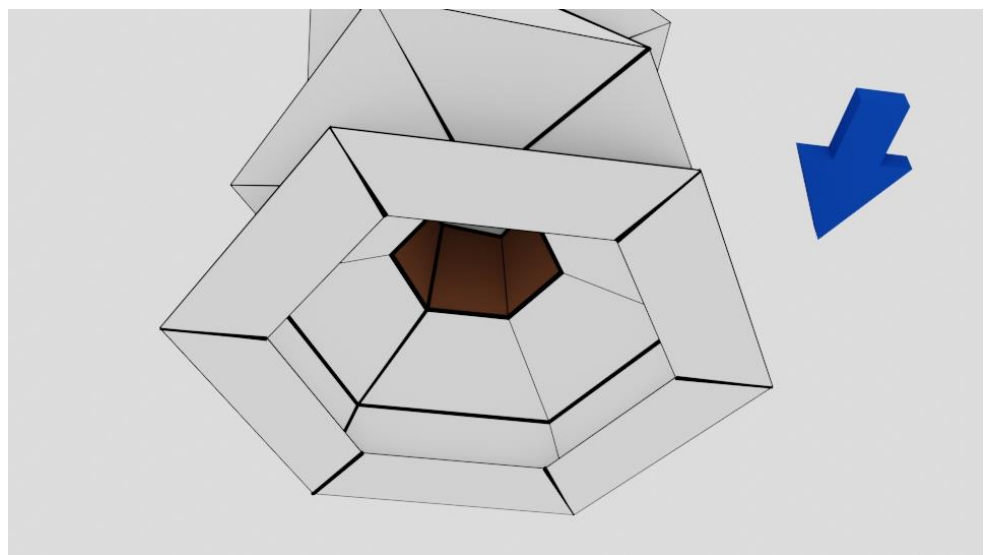
6

Add part 6.



Step 11

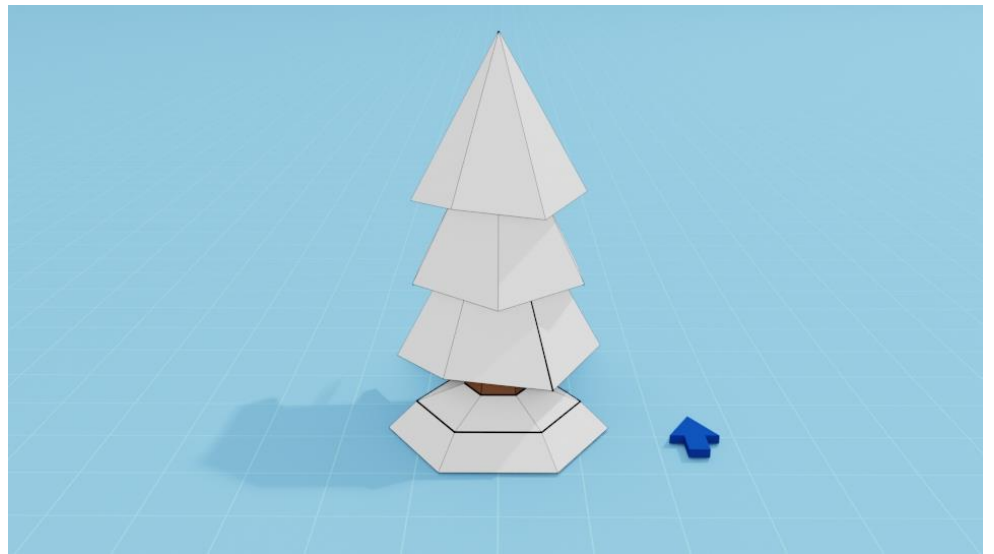
Finally you can fold and glue the bottom flaps.





Final

That's it, Tiny Tree is done!



Final

Try making some more trees, perhaps using the green paper instead of white or experiment by adding some decorations :)





Thank you!

I would like to thank you for purchasing from PaperPoly. Hope you enjoyed making this model, and hope you'll come back for more.

I really appreciate your interest in my designs, it means a lot to me.

I hope that the guide was easy to follow and if you have any questions you can write me where you purchased this template or on social media.

E-Mail: polypaper17@gmail.com

Website: www.paperpoly.com

If you want to signup for my newsletter you can do it at my website. I send newsletters once a month (or less) and there is always a free template for you as a gift. Sometimes there will be a month long coupon code for your next purchase.

If you are satisfied with the experience consider leaving a review where you purchased the template from, it really means a lot!